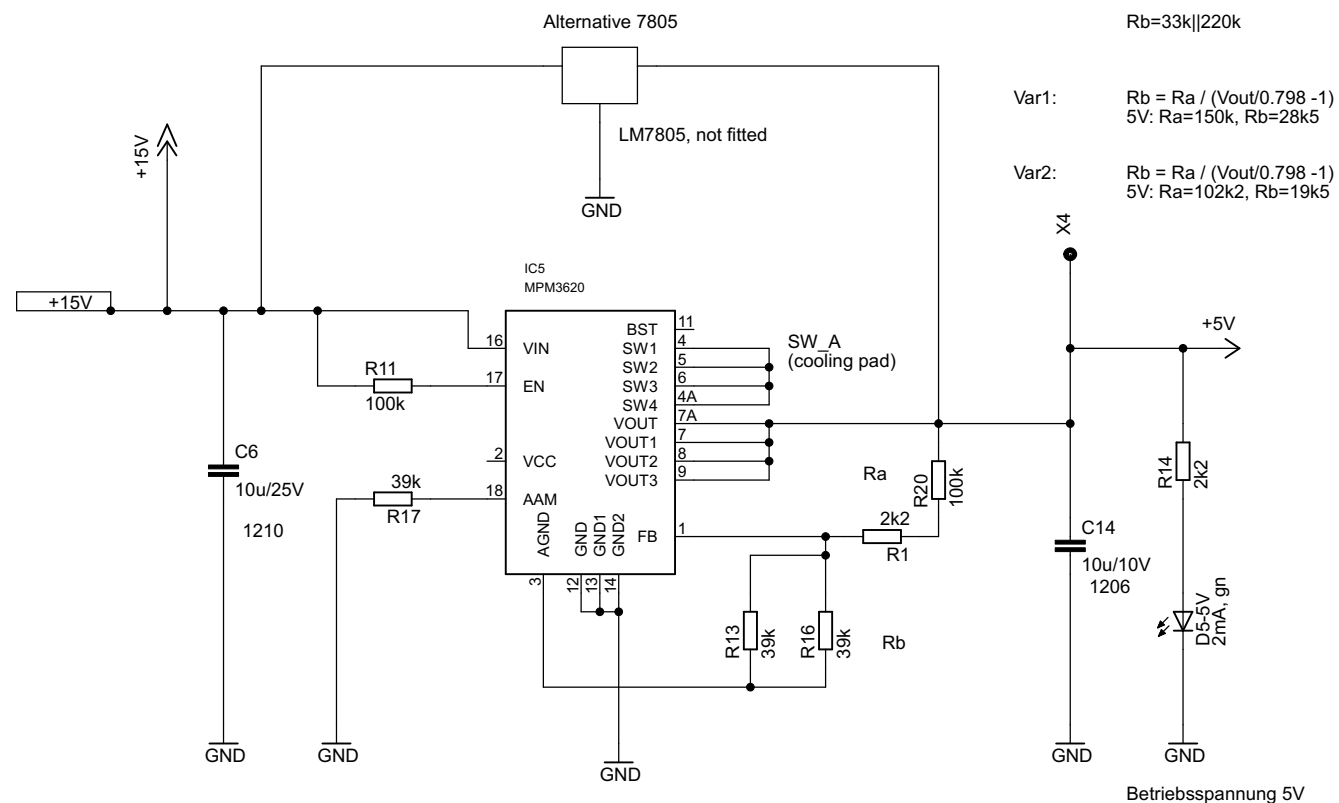


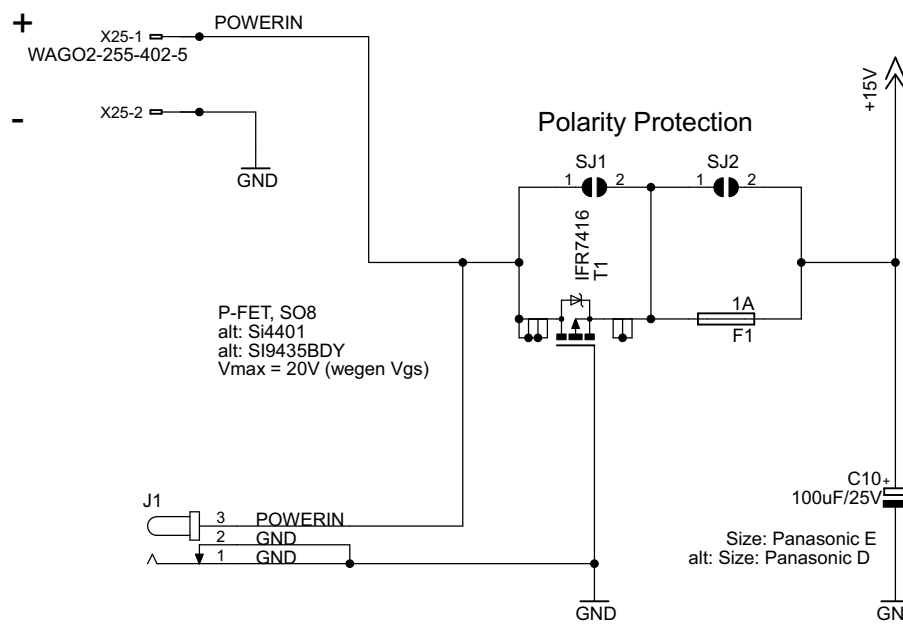
# Power

## Switch Regulator Module

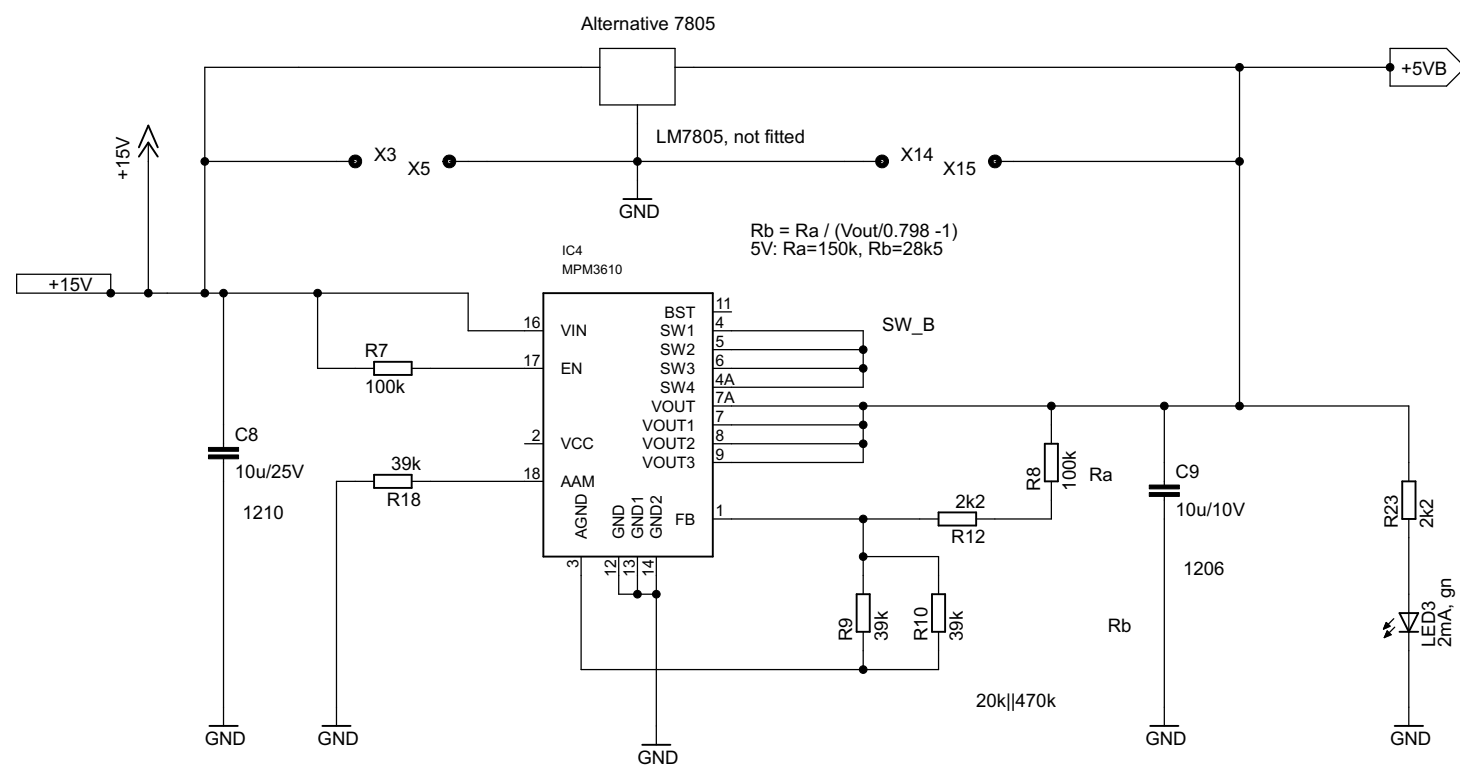


5V Switchregulator A

## Power Supply

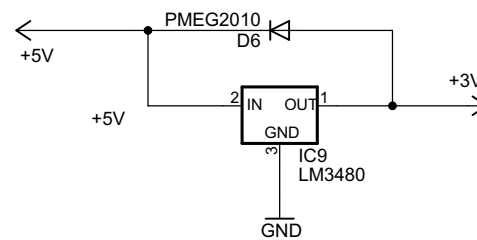


## Switch Regulator Module



5V Switchregulator B

## 3V3 Linear



### History

- 2016-04-24: V1.00 kw copied from ST4 and OneWS
- 2016-04-28: V1.00 kw added 5V Measure
- 2016-04-28: V1.01 kw moved WS2811 connector 1mm, moved ISP 0.5mm
- 2016-11-05: V1.02 kw added vias for THT fuse, better jumper position
- 2016-11-14: V1.02 kw outline 1mm



- H1 MOUNT-PAD-ROUND3.2
- H2 MOUNT-PAD-ROUND3.2
- H3 MOUNT-PAD-ROUND3.2
- H4 MOUNT-PAD-ROUND3.2

ENTWICKLER: Wolfgang Kufer	DATEINAME: NeoControl1_V1.02
ZEICHNER: www.opendcc.de	Last mod: 14.11.2016 15:19:16
AUFTR.-NR.:	Blatt: 1/4
GER.-NR.:	zu GERÄT:

01

02

03

04

05

06

07

08

# Interface

A

A

B

B

C

C

D

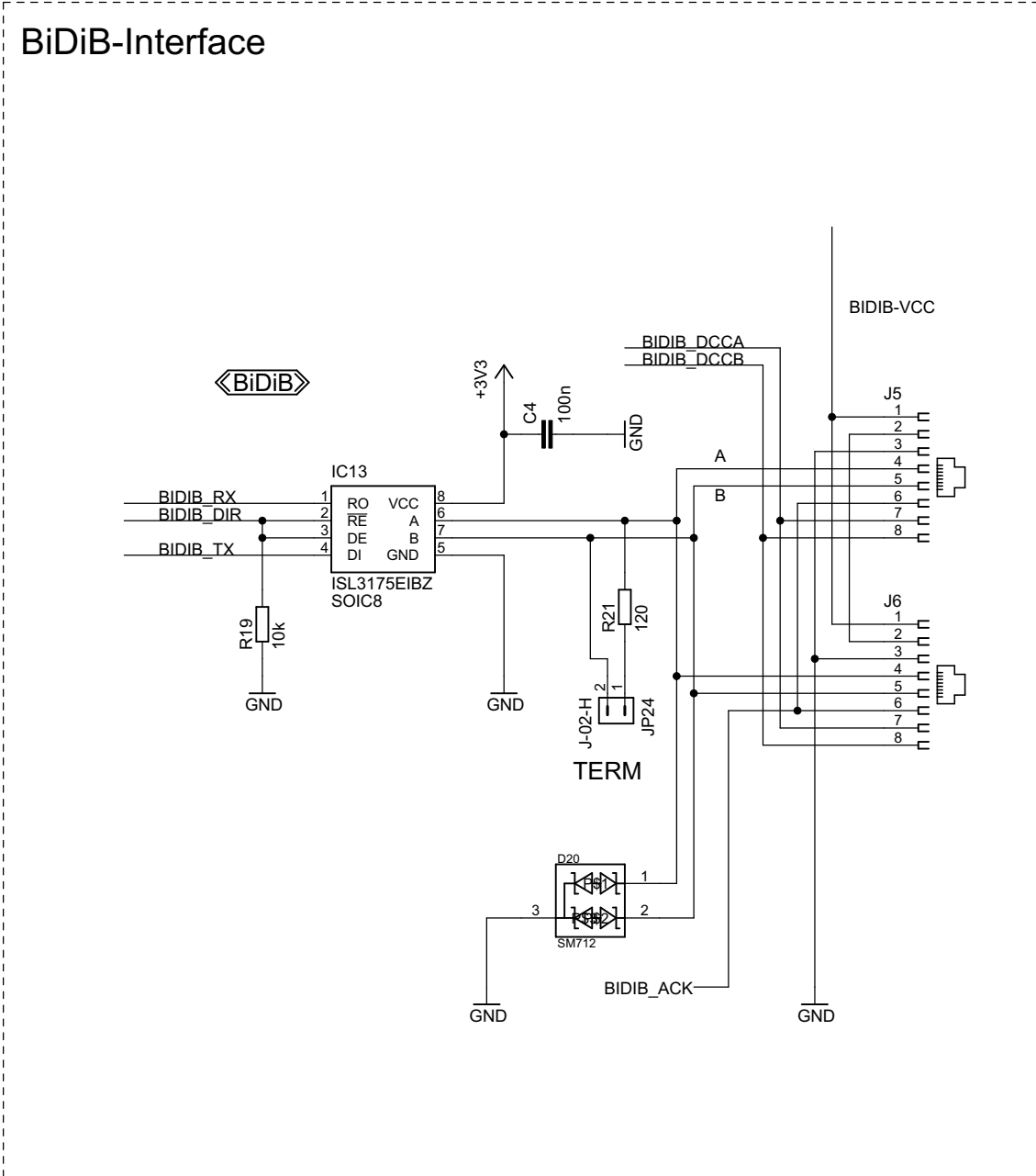
D

E

E

F

F



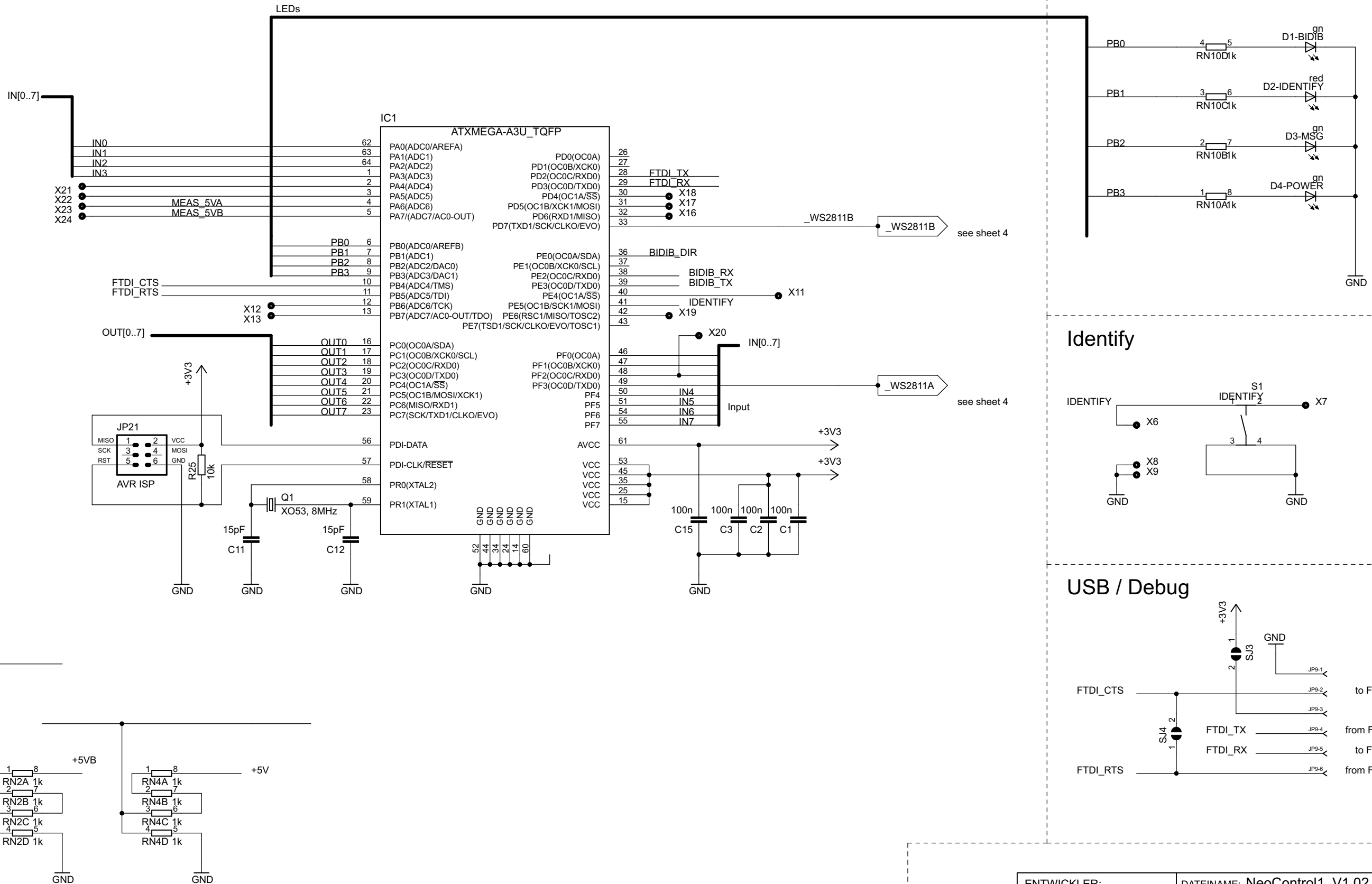
ENTWICKLER:	DATEINAME: NeoControl1_V1.02	
ZEICHNER:	Last mod: 14.11.2016 15:19:16	
AUFTR.-NR.:		Blatt:
GER.-NR.:	zu GERÄT:	2/4

# Processor

## Control-LED

## Identify

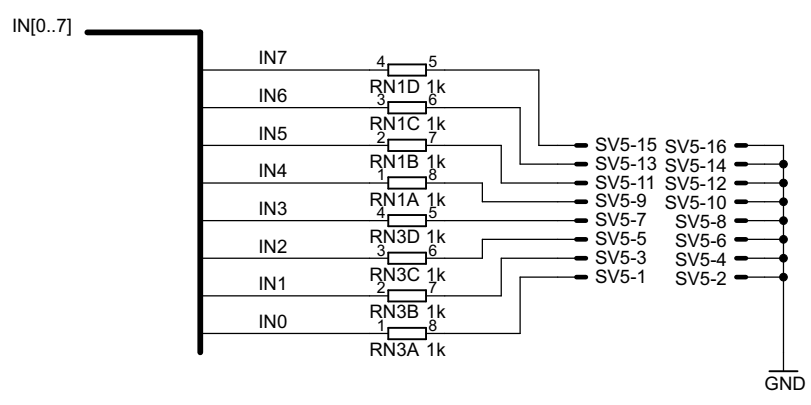
## USB / Debug



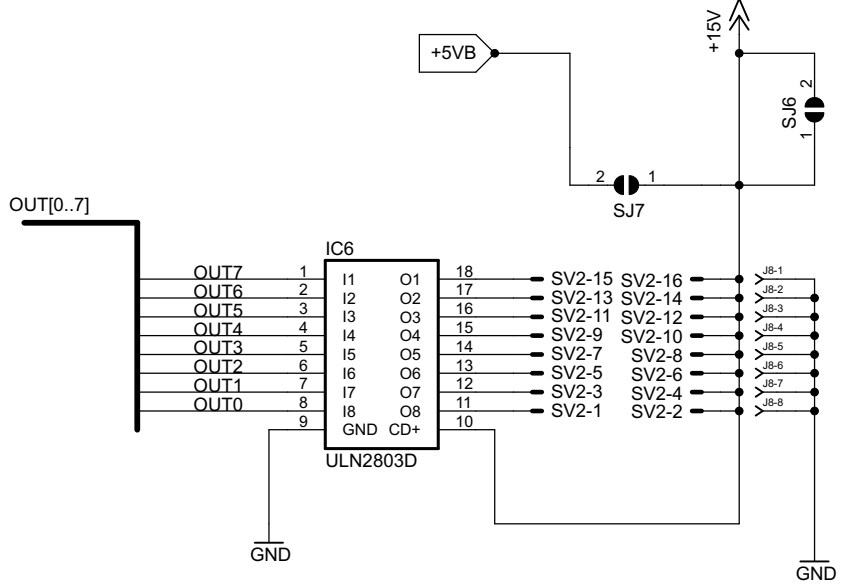
ENTWICKLER:	DATEINAME: NeoControl1_V1.02
ZEICHNER:	Last mod: 14.11.2016 15:19:16
AUFTR.-NR.:	Blatt: 3/4
GER.-NR.:	zu GERÄT:

# IO-Modules

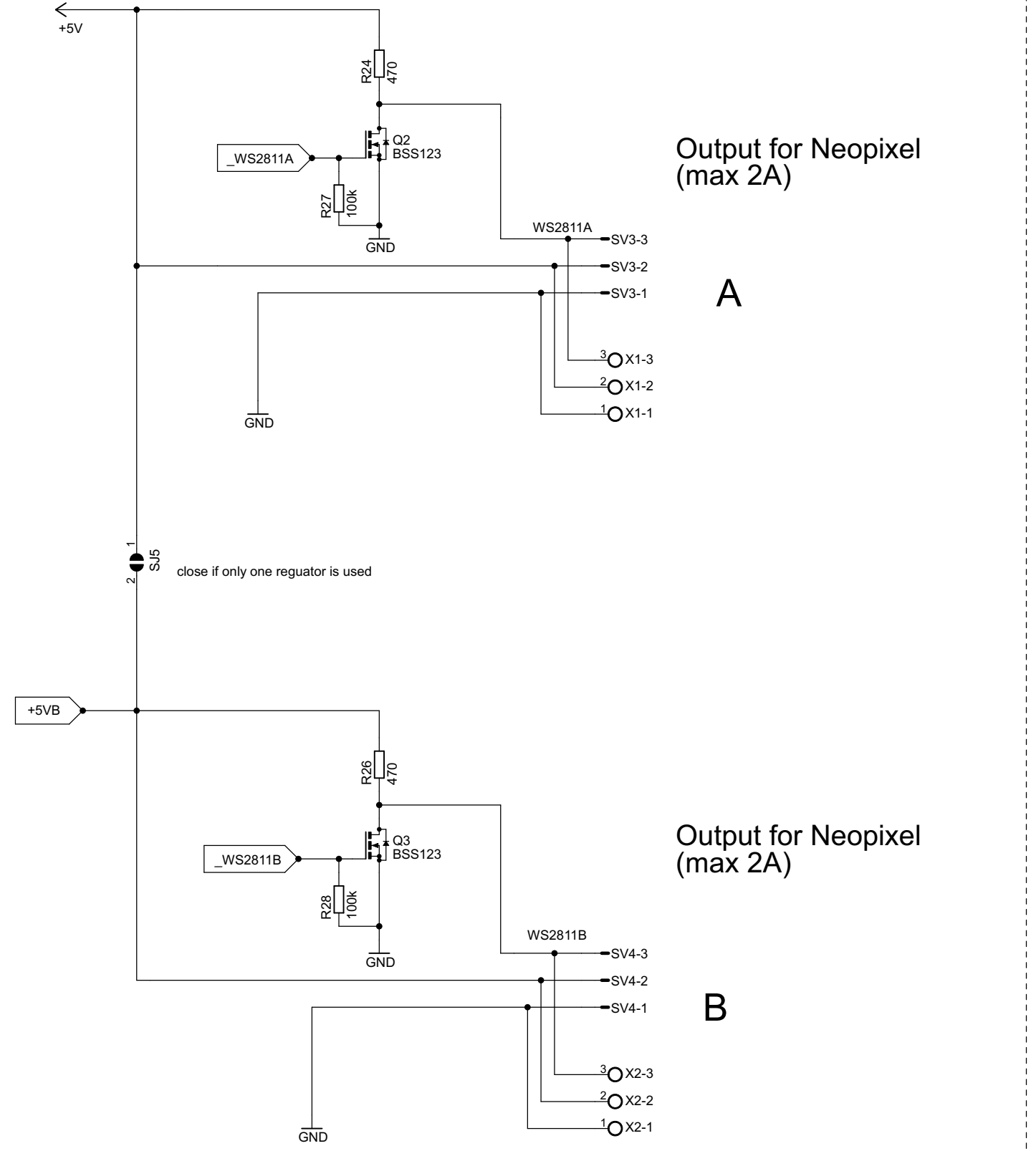
## Input



## Output



## WS2811-Ports



Output for Neopixel (max 2A)

Output for Neopixel (max 2A)

ENTWICKLER:	DATEINAME: NeoControl1_V1.02	
ZEICHNER:	Last mod: 14.11.2016 15:19:16	
AUFTR.-NR.:		Blatt: 4/4
GER.-NR.:	zu GERÄT:	